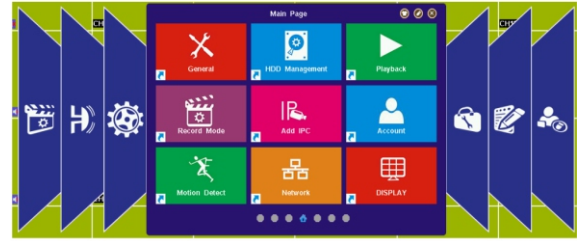


HI-2216LE (16Video/2Audio DVR)
All In One DVR (Analoge,NVR,AHD)



Features

- H.264 video compression.
- HDMI and VGA output at up to 1280×1024P.
- Dual-stream & Mobile Surveillance.
- Up to 4/8/16-ch synchronous playback.
- AHD/NVR/DVR Three-in-one

Specifications

Rear Panel



- 1- Video in
- 2- Video out
- 3- VGA interface
- 4- Audio in
- 5- Network interface
- 6- HDMI interface
- 7- USB interface
- 8- RS-485
- 9- DC12 V

Analog video input	16PCS BNC Port(Level: 1.0Vp-p, impedance : 75Ω)
Audio input	2PCS RCA Port(Level : 2.0Vp-p, impedance : 1kΩ)
HDMI output	1024x768, 1280*720, 1280x1024
CVBS output	1PCS BNC Port(Level: 1.0Vp-p, impedance : 75Ω)
VGA output	1024x768, 1280*720, 1280x1024
Audio output	1PCS RCA Port(line level , impedance : 1kΩ)
Multi-mode switch	Analog: 16CH*960H) , AHD: 16CH*720P AHD+Analog: 8CH*720P+8CH*720P
Video compress standard	H.264
Vdieo code resolution	CIF/D1/720P/960H
Playback resolution	Angal+AHD 8CH 720P@200/240fps, Analog 16CH D1@400/480fps , AHD 8CH 720P@160fps
Video frame rate	NTSC: 1~30FPS/S; PAL: 1~25FPS/S
Video code rate	256kps/384Kbps/512Kbps/640kbps/768Kbps/1M/1.5M/2M/2.5M/3M/4M/5M/6M/8M
Recording Mode	Manual / Timer / Motion / Alarm / Remote
Audio compress standard	ADPCM
Audio code rate	16kpbs
Dual-stream	YES
Synchronously playback channels	1/4 CH
Mode	2*SATA
HDD capacity	support max 4TB HDD
Voice intercom	1PCS RCA Port(Level : 2.0Vp-p, impedance : 1kΩ)
Internet port	1PCS RJ45 10M / 100M adaptive Ethernet Interface
Serial port & PTZ control	1PCS RS485
USB port	2*USB2.0
Alarm input	No
Alarm output	No
Power supply	DC12V
Power consumption(without HDD)	≤24W
Work temperature & humidity	-10°C-- +55°C & Up To 90%
Weight & Dimensions	1.57kg , 335*255*50 cm



Download APP



iOS



Android